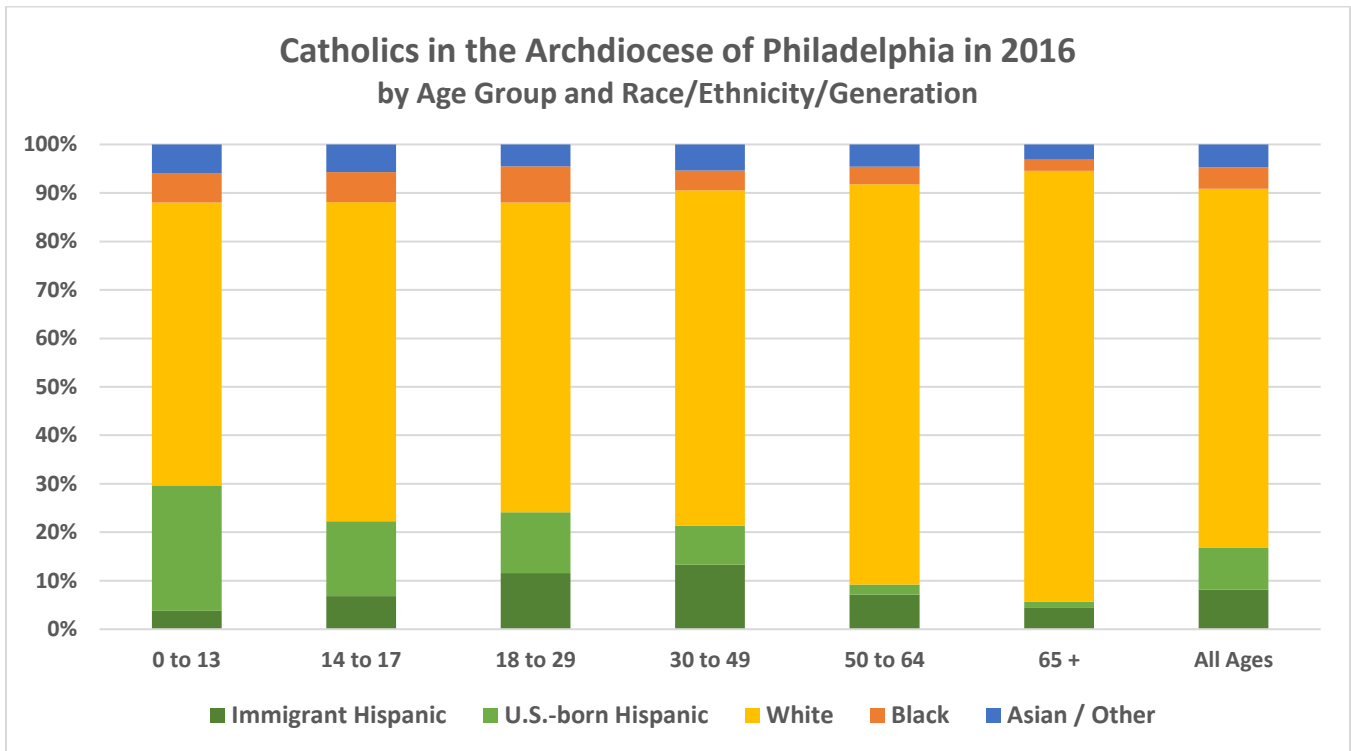


# Key Demographic, Social, and Religious Statistics for the Archdiocese of Philadelphia



Racial/Ethnic Groups in the Archdiocese of Philadelphia	Total Population in 2000	Total Population in 2016	% Change	Estimated Catholics in 2016	% Catholic
White	2,645,488	2,489,507	-6%	688,000	28%
Hispanic	182,727	358,485	96%	157,000	44%
Black	838,309	937,904	12%	41,000	4%
Asian/Other	183,123	312,922	71%	44,000	14%
<b>Total</b>	<b>3,849,647</b>	<b>4,098,818</b>	<b>6%</b>	<b>930,000</b>	<b>23%</b>

Number of **parishes** with an organized Hispanic Ministry: **38**

Total regular **Mass attendance** in Spanish: **11,617** at **46** weekly Masses in Spanish in the Diocese  
**443** at **3** monthly Masses in Spanish in the Diocese

Number of Hispanics/Latinos **enrolled in Catholic schools**:

Kinder to 8<sup>th</sup>: **3,277** out of 47,183 enrolled      High School: **799** out of 21,077 enrolled

Number of Hispanic/Latino **priests** in the Diocese... Active: **26** Retired/Inactive: **1** Foreign-born: **25**

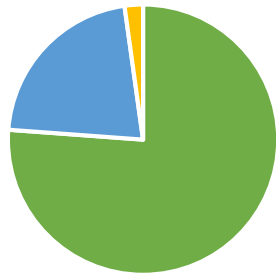
Number of Hispanic/Latino/a **religious** living and/or serving in the Diocese: **30**

Number of Hispanic/Latino **deacons** living and/or serving in the Diocese: **23**

Number of Hispanic/Latino/a **lay ecclesial ministers** serving 20+ hours per week in the Diocese: **78**

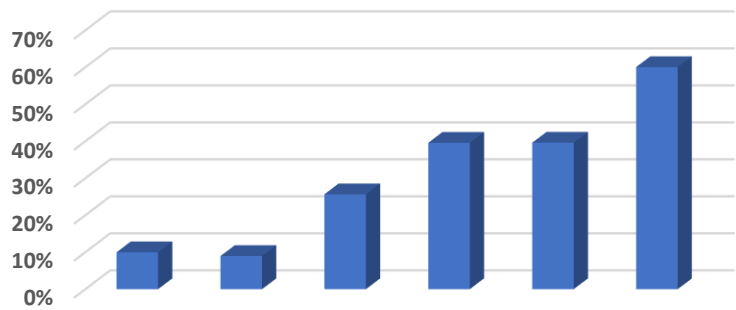
## Public Data from the U.S. Census Bureau's American Community Survey for the Geographic Territory Covered by the Archdiocese of Philadelphia

**Hispanic/Latino Household Language in 2016**



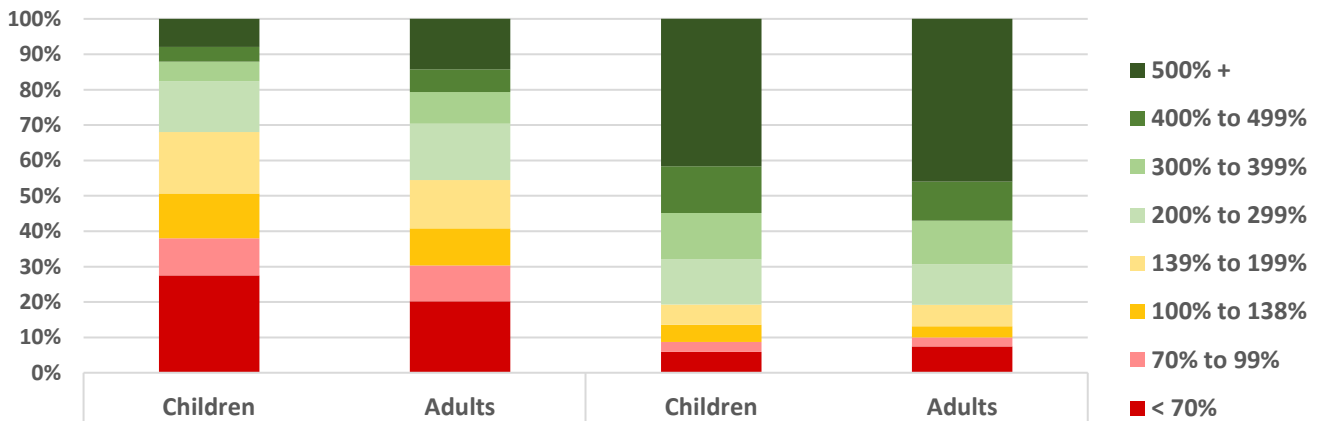
■ Spanish ■ English ■ Other

**Hispanics/Latinos Who Do Not Speak English "Very Well" from 2012 to 2015, by Age**



5 to 13 14 to 17 18 to 29 30 to 49 50 to 64 65 +

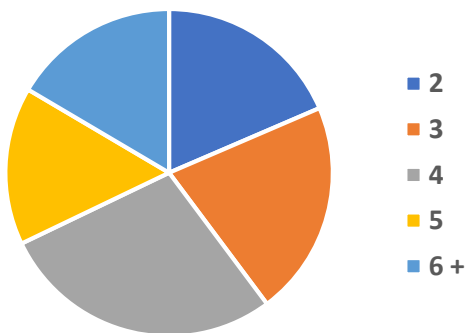
**Household Income as a Percentage of Poverty Level in 2016**



Median Hispanic Household Income: **\$43,500**

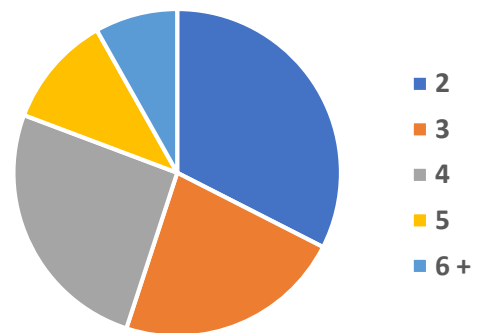
Median White Household Income: **\$99,000**

**Hispanic Family Size in 2016**



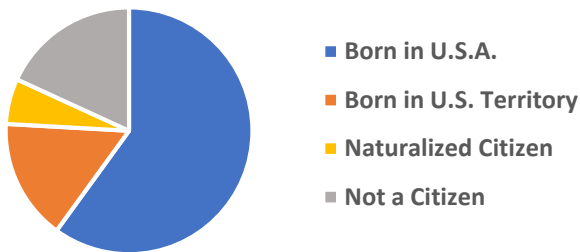
Average Family Size: **4.0**

**White, Non-Hispanic Family Size**

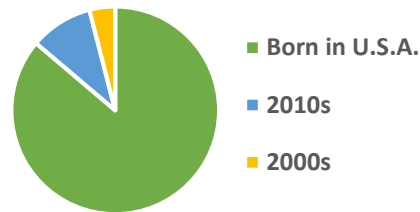


Average Family Size: **3.4**

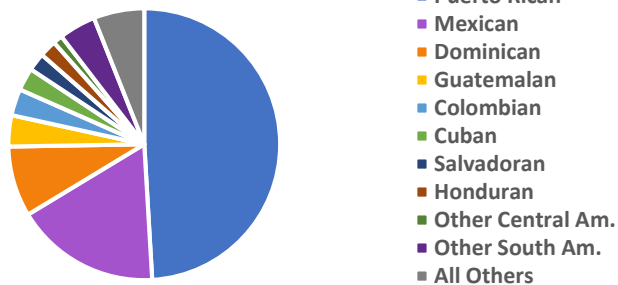
**Citizenship of Hispanic Residents in 2016**



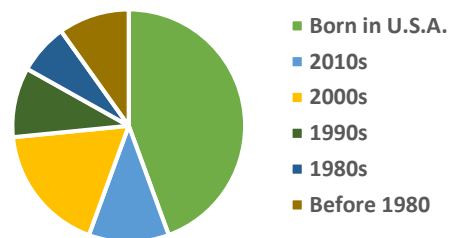
**Decade of Entry for Hispanic Children**



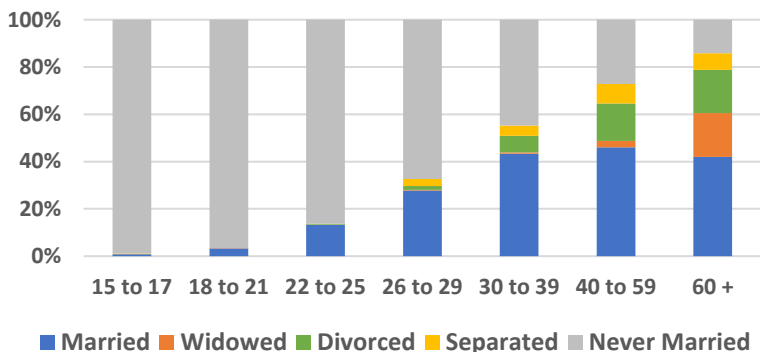
**National Heritage of Hispanic Residents in 2016**



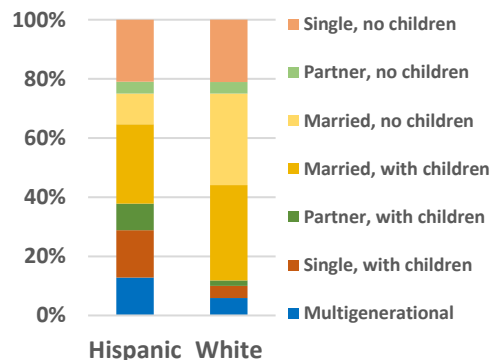
**Decade of Entry for Hispanic Adults**



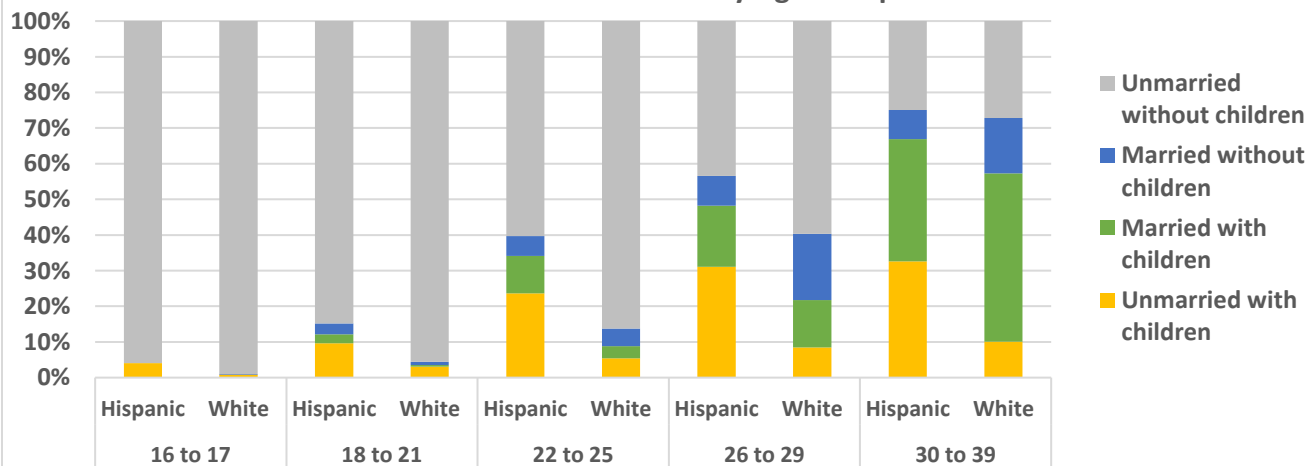
**Hispanic Marital Status by Age from 2012 to 2015**



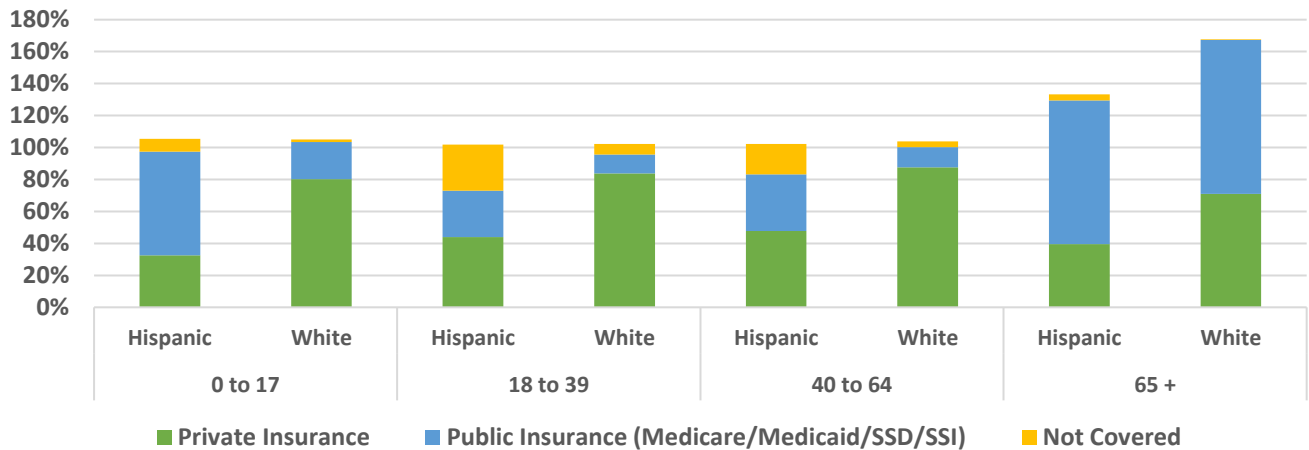
**Household Type, 2012 to 2015**



**Marital and Parental Status of Women by Age Group from 2012 to 2015**

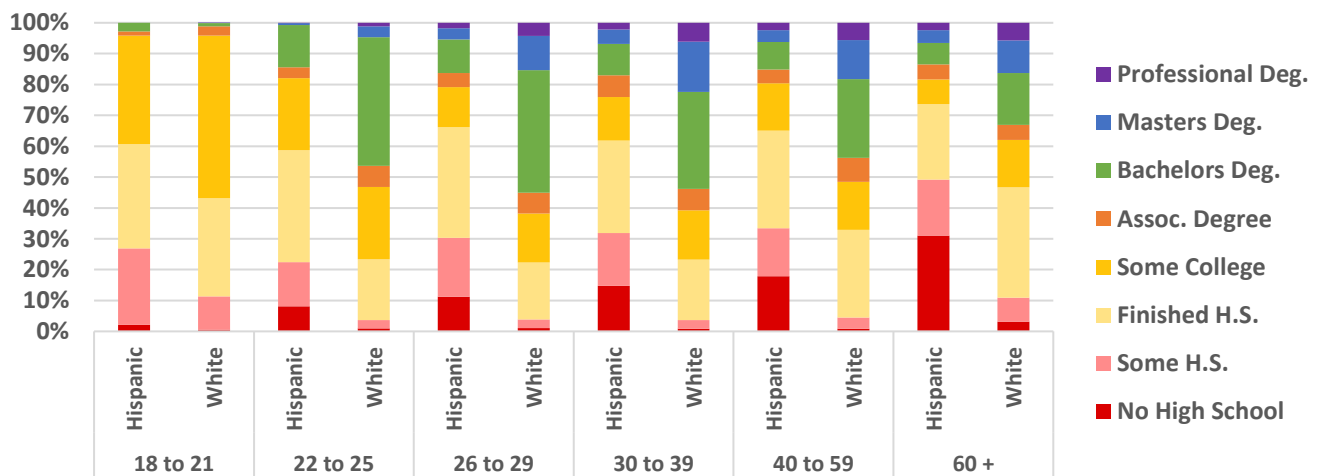


### Health Insurance Coverage by Age Group in 2016\*



\* Numbers may exceed 100% because some individuals may have a combination of public and private insurance.

### Educational Attainment by Age Group from 2012 to 2015



### School Enrollment Status by Age Group from 2012 to 2015

