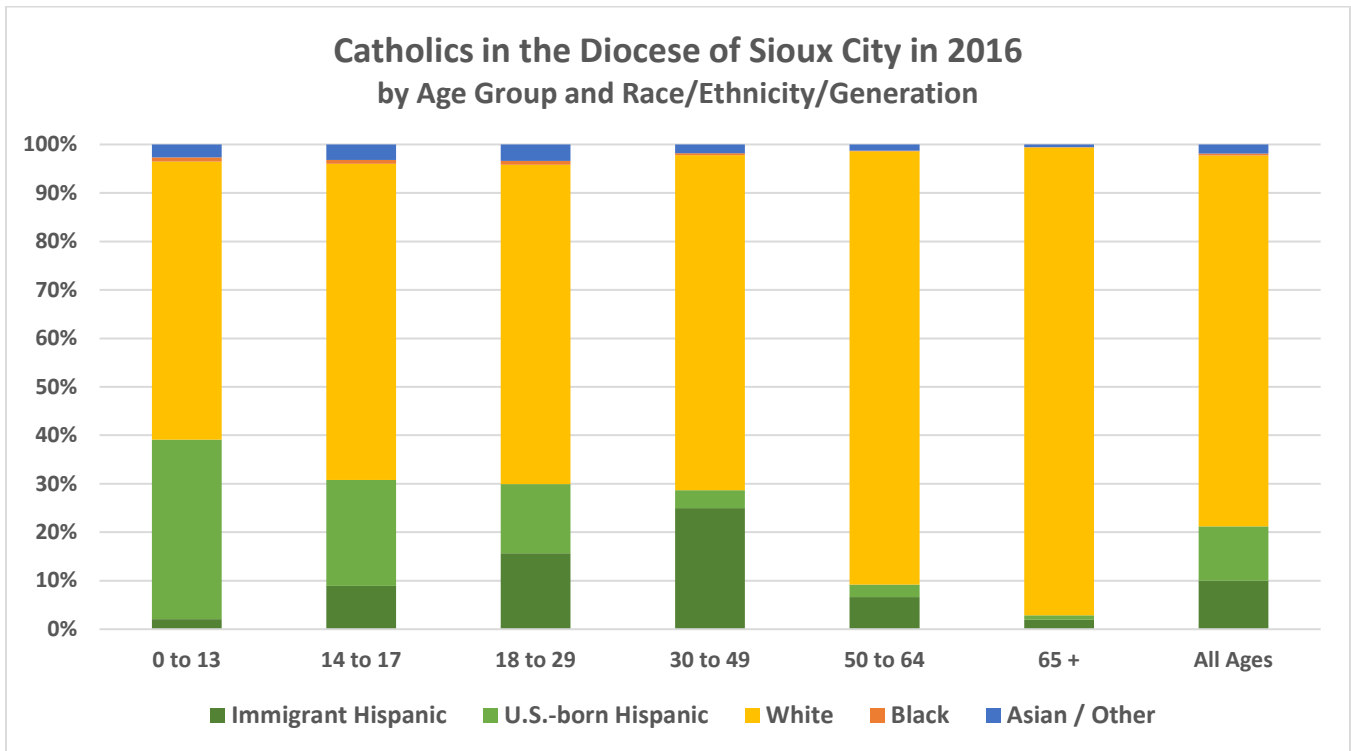


# Key Demographic, Social, and Religious Statistics for the Diocese of Sioux City



Racial/Ethnic Groups in the Diocese of Sioux City	Total Population in 2000	Total Population in 2016	% Change	Estimated Catholics in 2016	% Catholic
White	441,934	395,851	-10%	74,000	19%
Hispanic	18,144	40,584	124%	20,500	50%
Black	4,326	10,689	147%	400	4%
Asian/Other	10,090	13,961	38%	1,800	13%
<b>Total</b>	<b>474,494</b>	<b>461,085</b>	<b>-3%</b>	<b>96,000</b>	<b>21%</b>

Number of **parishes** with an organized Hispanic Ministry: **10**

Total regular **Mass attendance** in Spanish: **3,424** at **14** weekly Masses in Spanish in the Diocese  
**0** at **0** monthly Masses in Spanish in the Diocese

Number of Hispanics/Latinos **enrolled in Catholic schools**:

Kinder to 8<sup>th</sup>: **495** out of 4,653 enrolled

High School: **209** out of 1,451 enrolled

Number of Hispanic/Latino **priests** in the Diocese... Active: **2** Retired/Inactive: **0** Foreign-born: **2**

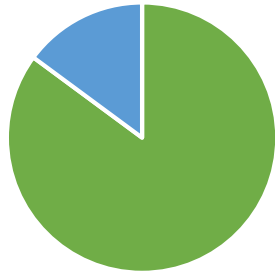
Number of Hispanic/Latino/a **religious** living and/or serving in the Diocese: **0**

Number of Hispanic/Latino **deacons** living and/or serving in the Diocese: **1**

Number of Hispanic/Latino/a **lay ecclesial ministers** serving 20+ hours per week in the Diocese: **???**

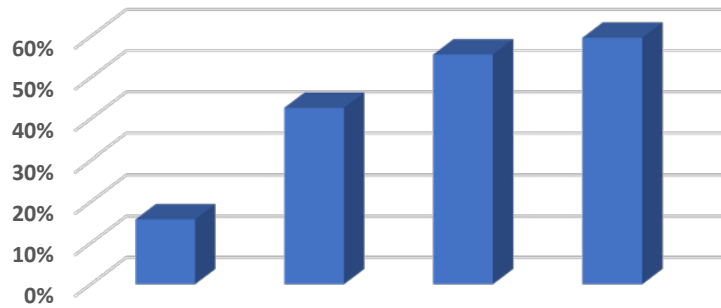
## Public Data from the U.S. Census Bureau's American Community Survey for the Geographic Territory Covered by the Diocese of Sioux City

**Hispanic/Latino Household Language, 2012 to 2015**



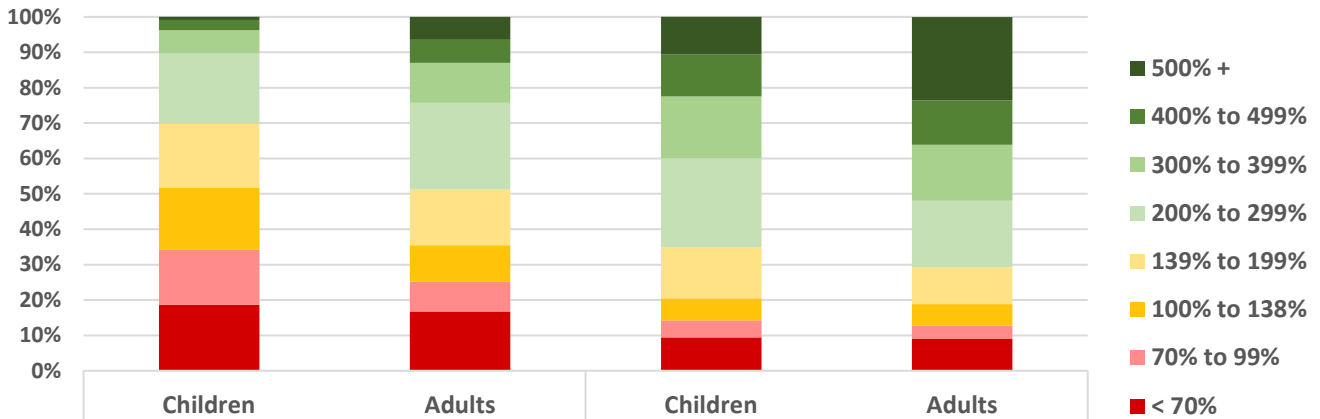
■ Spanish ■ English ■ Other

**Hispanics/Latinos Who Do Not Speak English "Very Well" from 2012 to 2015, by Age**



5 to 17    18 to 39    40 to 64    65 +

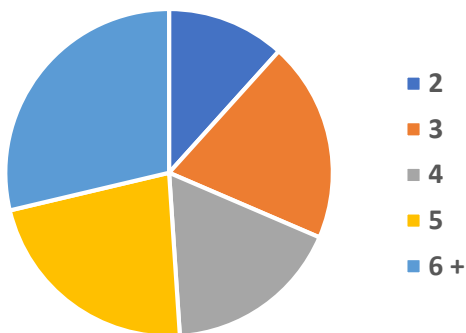
**Household Income as a Percentage of Poverty Level, 2012 to 2015**



Median Hispanic Household Income: **\$41,000**

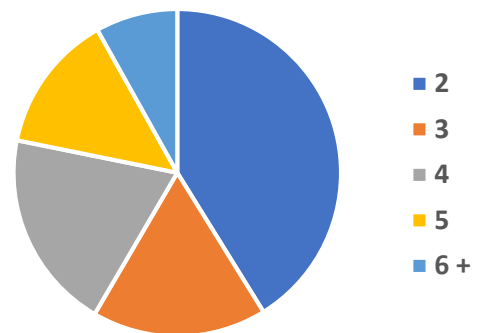
Median White Household Income: **\$62,500**

**Hispanic Family Size, 2012 to 2015**



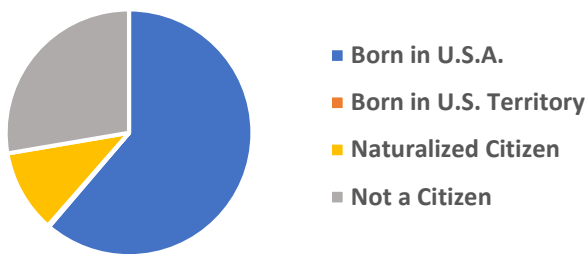
Average Family Size: **4.7**

**White, Non-Hispanic Family Size**

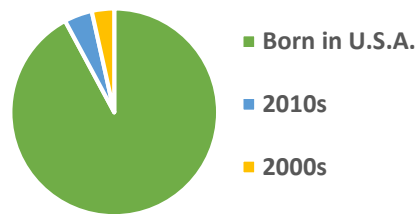


Average Family Size: **3.4**

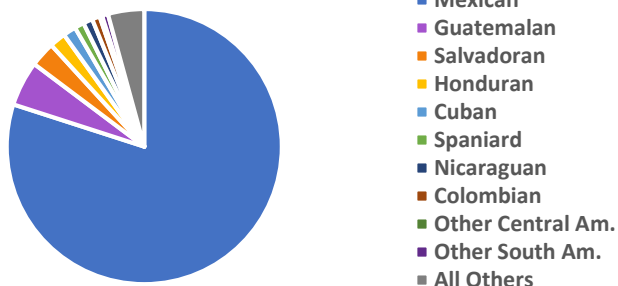
**Citizenship of Hispanic Residents, 2012 to 2015**



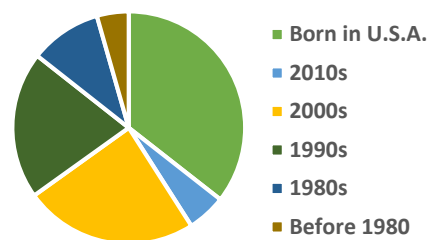
**Decade of Entry for Hispanic Children**



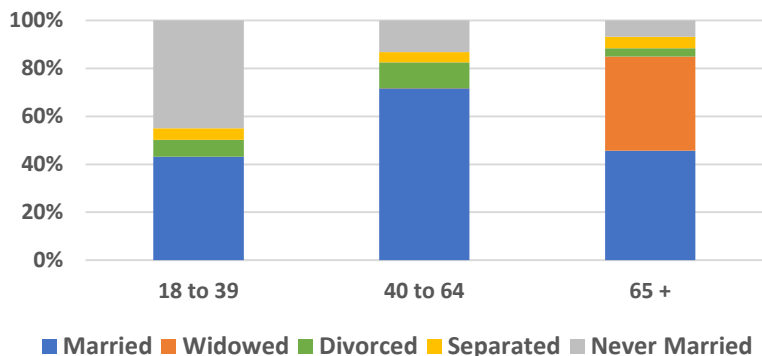
**National Heritage of Hispanic Residents, 2012 to 2015**



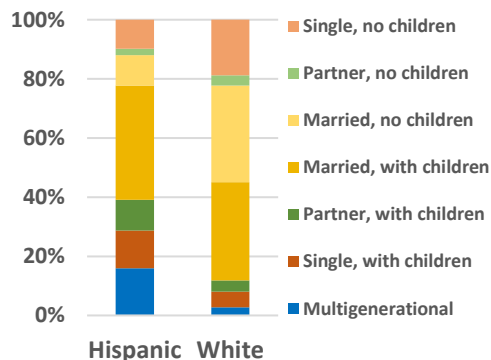
**Decade of Entry for Hispanic Adults**



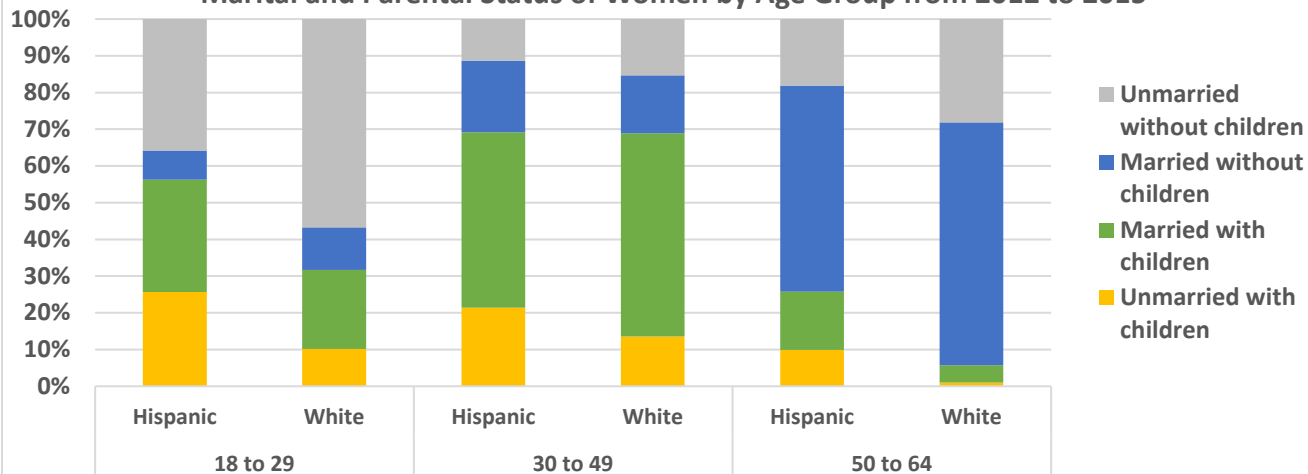
**Hispanic Marital Status by Age from 2012 to 2015**



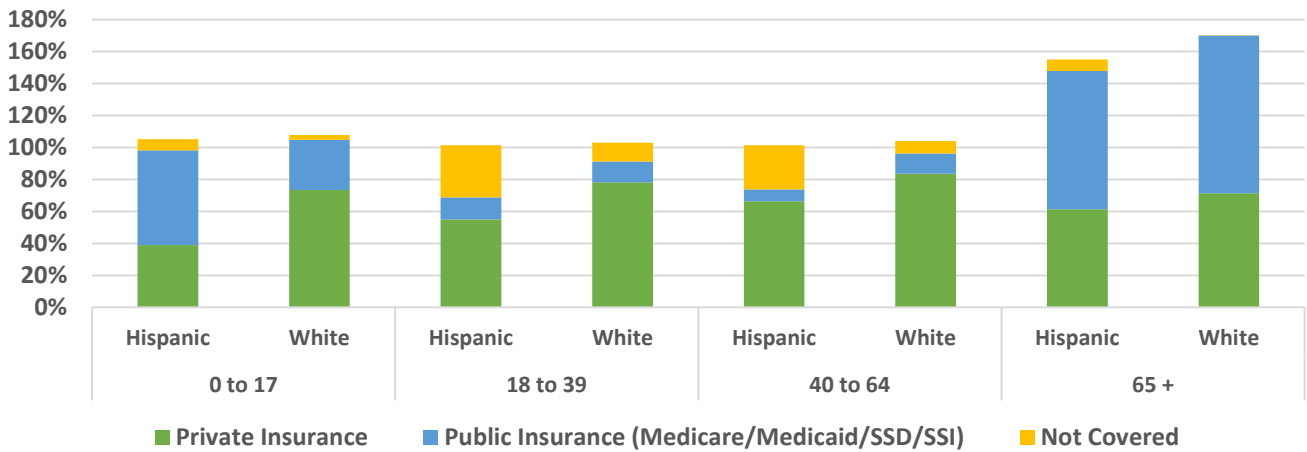
**Household Type, 2012 to 2015**



**Marital and Parental Status of Women by Age Group from 2012 to 2015**

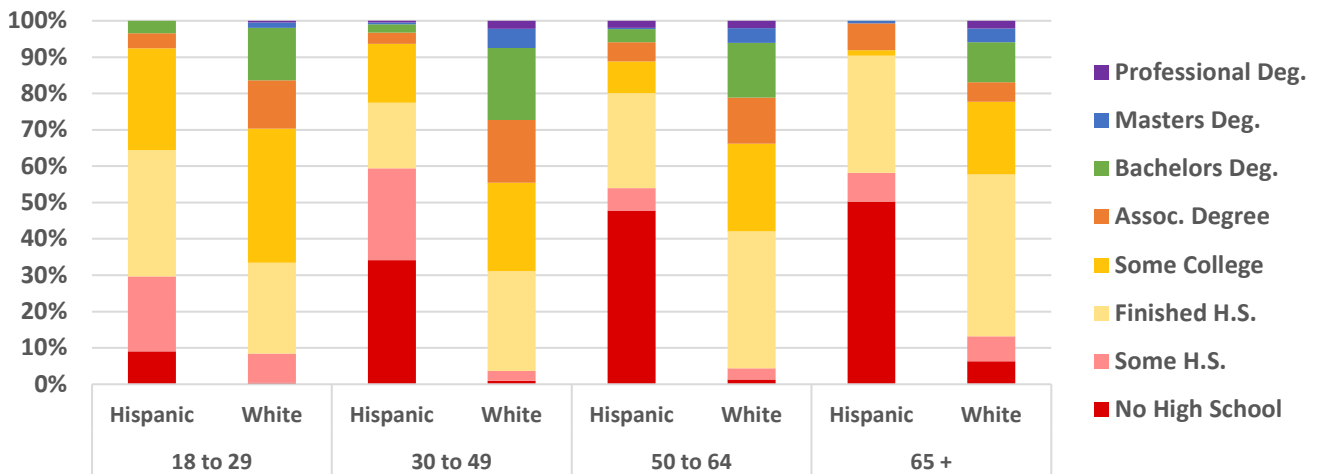


### Health Insurance Coverage by Age Group, 2012 to 2015\*



\* Numbers may exceed 100% because some individuals may have a combination of public and private insurance.

### Educational Attainment by Age Group from 2012 to 2015



### School Enrollment Status by Age Group from 2012 to 2015

