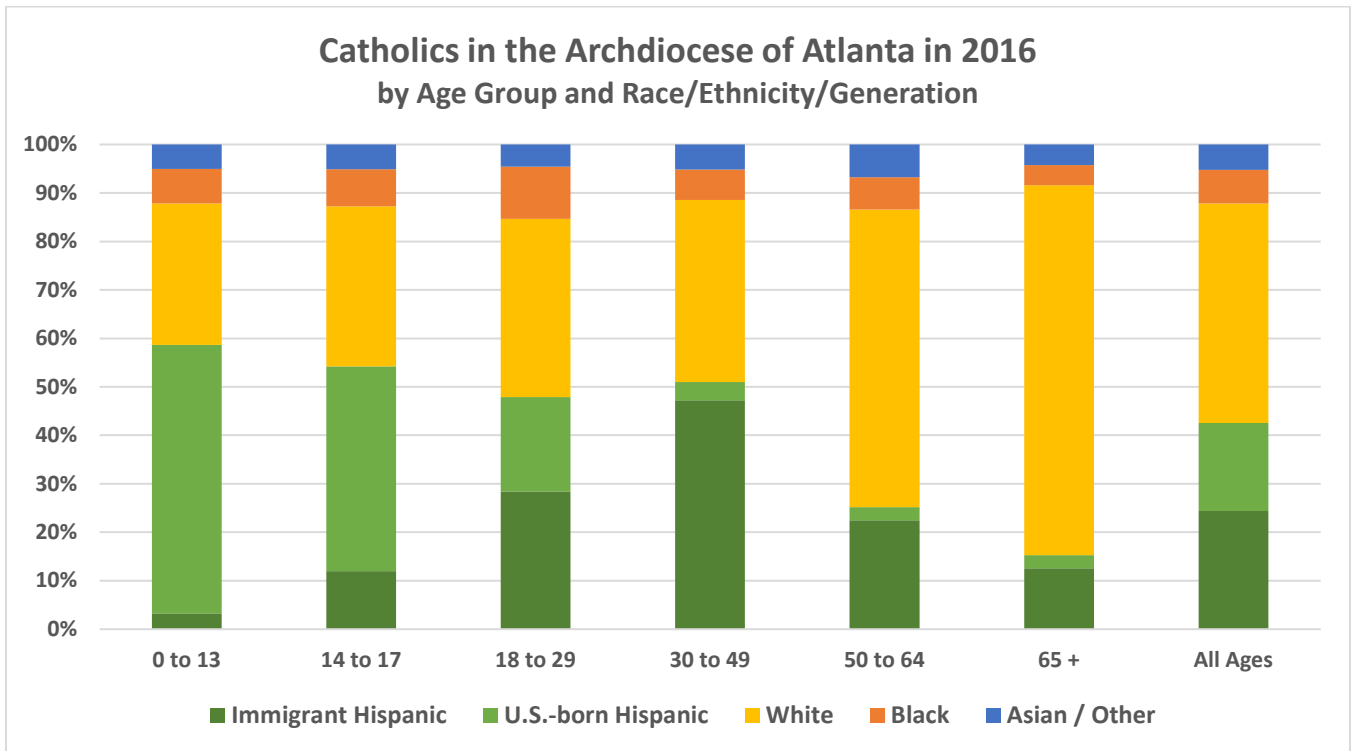


# Key Demographic, Social, and Religious Statistics for the Archdiocese of Atlanta



Racial/Ethnic Groups in the Archdiocese of Atlanta	Total Population in 2000	Total Population in 2016	% Change	Estimated Catholics in 2016	% Catholic
White	3,590,962	3,885,938	8%	380,000	10%
Hispanic	352,564	788,208	124%	357,000	45%
Black	1,407,948	2,229,566	58%	58,000	3%
Asian/Other	219,481	450,220	105%	44,000	10%
<b>Total</b>	<b>5,570,955</b>	<b>7,353,932</b>	<b>32%</b>	<b>840,000</b>	<b>11%</b>

Number of **parishes** with an organized Hispanic Ministry: **60**

Total regular **Mass attendance** in Spanish: **52,000** at **159** weekly Masses in Spanish in the Diocese  
**0** at **0** monthly Masses in Spanish in the Diocese

Number of Hispanics/Latinos **enrolled in Catholic schools**:

Kinder to 8<sup>th</sup>: **913** out of 7,035 enrolled

High School: **741** out of 4,674 enrolled

Number of Hispanic/Latino **priests** in the Diocese... Active: **47** Retired/Inactive: **0** Foreign-born: **47**

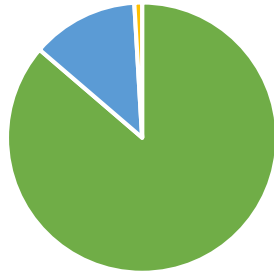
Number of Hispanic/Latino/a **religious** living and/or serving in the Diocese: **5**

Number of Hispanic/Latino **deacons** living and/or serving in the Diocese: **22**

Number of Hispanic/Latino/a **lay ecclesial ministers** serving 20+ hours per week in the Diocese: **175**

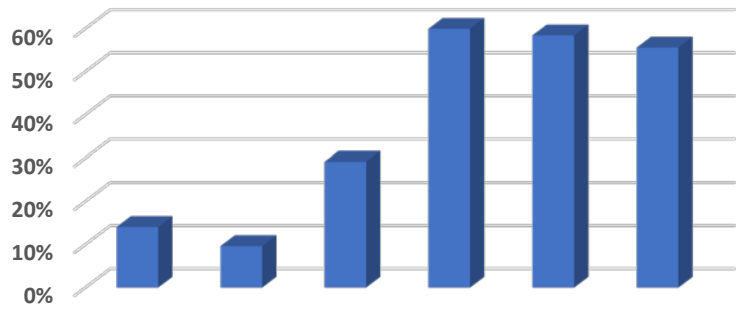
## Public Data from the U.S. Census Bureau's American Community Survey for the Geographic Territory Covered by the Archdiocese of Atlanta

Hispanic/Latino Household Language in 2016

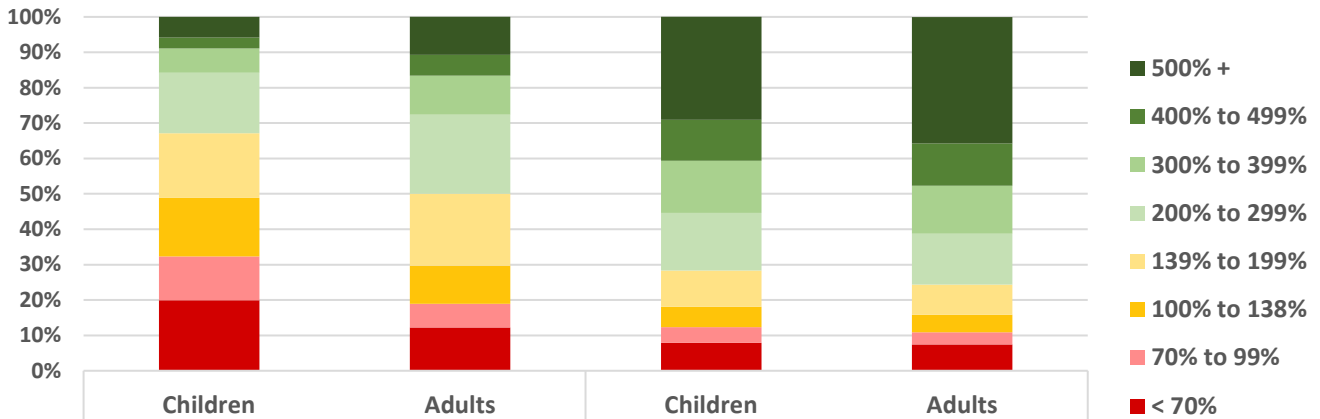


■ Spanish ■ English ■ Other

Hispanics/Latinos Who Do Not Speak English "Very Well" in 2016, by Age



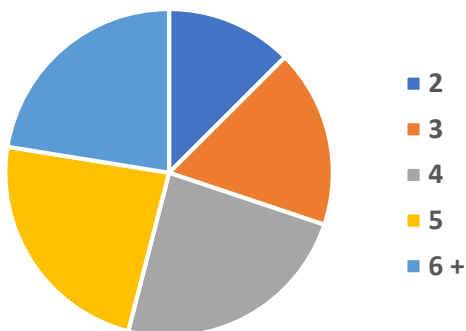
Household Income as a Percentage of Poverty Level in 2016



Median Hispanic Household Income: **\$52,000**

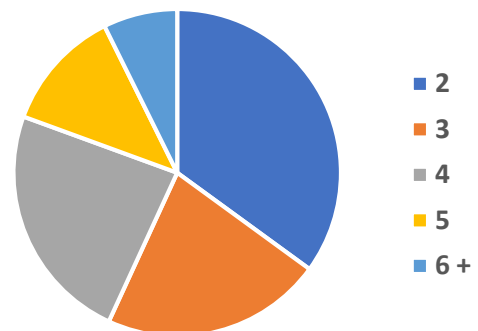
Median White Household Income: **\$79,500**

Hispanic Family Size in 2016



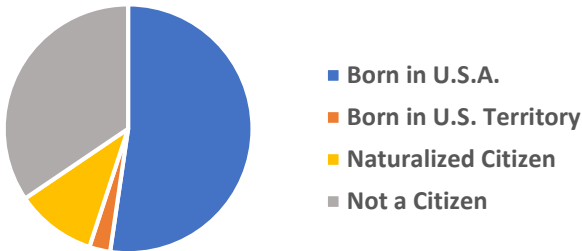
Average Family Size: **4.5**

White, Non-Hispanic Family Size

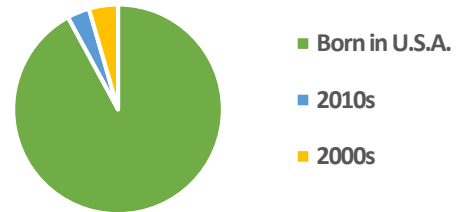


Average Family Size: **3.4**

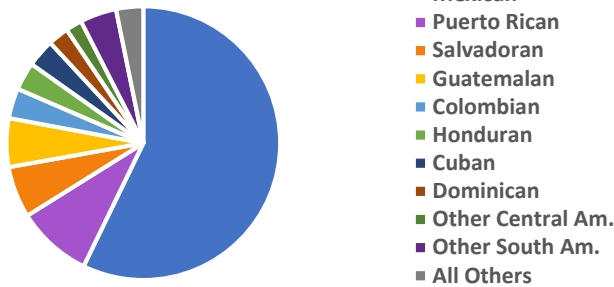
**Citizenship of Hispanic Residents in 2016**



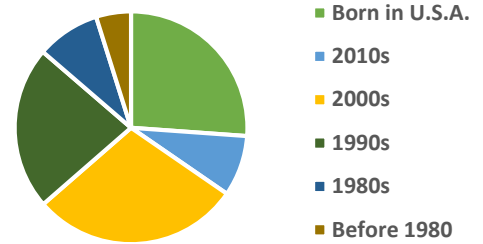
**Decade of Entry for Hispanic Children**



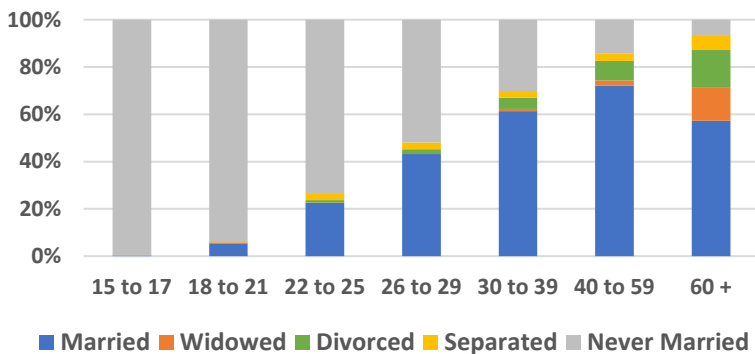
**National Heritage of Hispanic Residents in 2016**



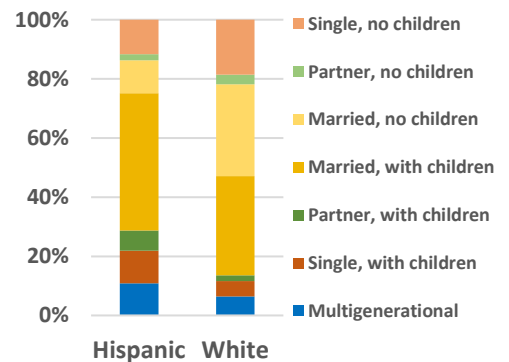
**Decade of Entry for Hispanic Adults**



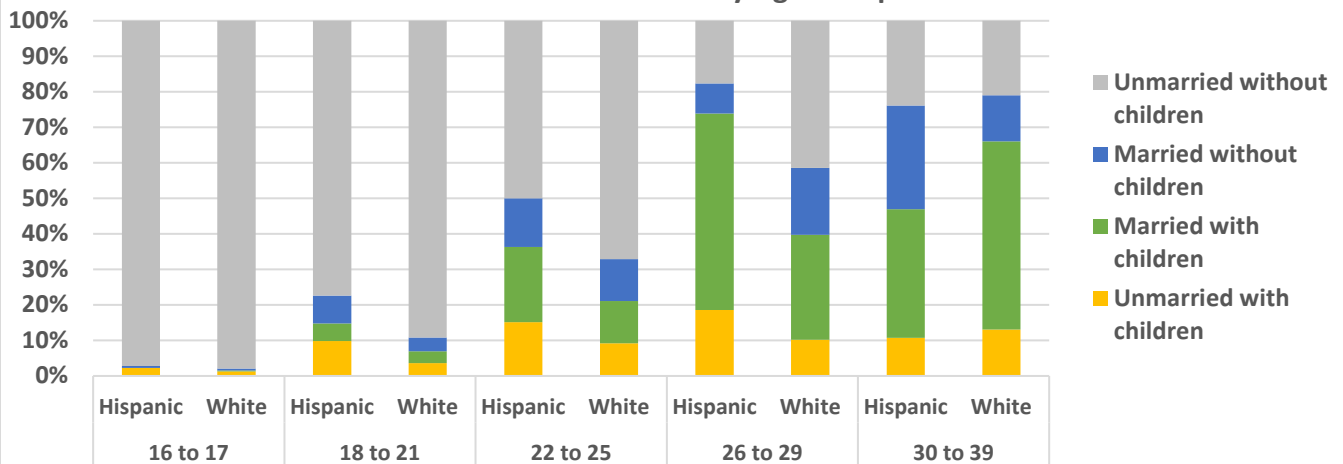
**Hispanic Marital Status by Age in 2016**



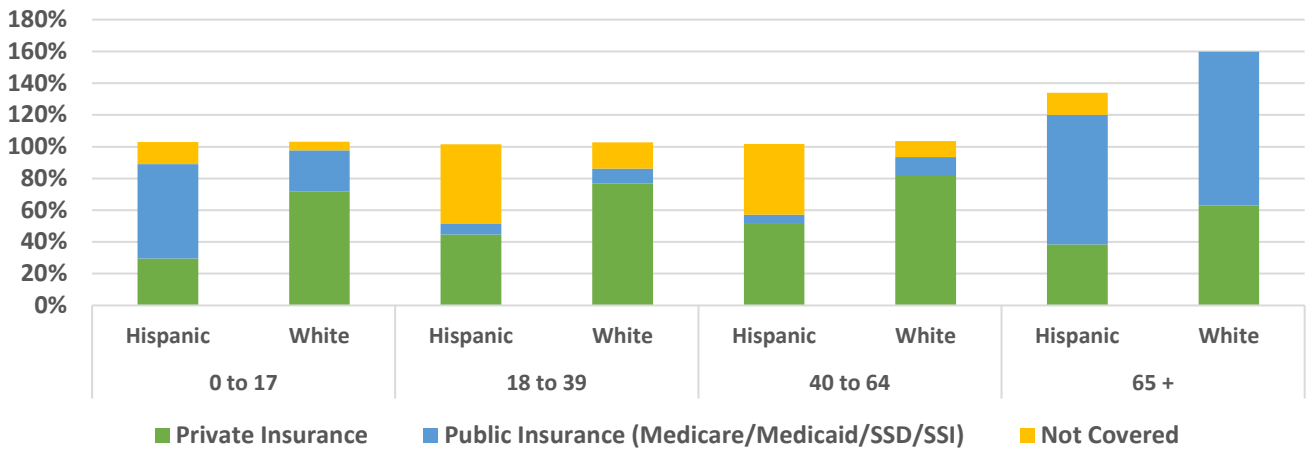
**Household Type, 2012 to 2015**



**Marital and Parental Status of Women by Age Group from 2012 to 2015**

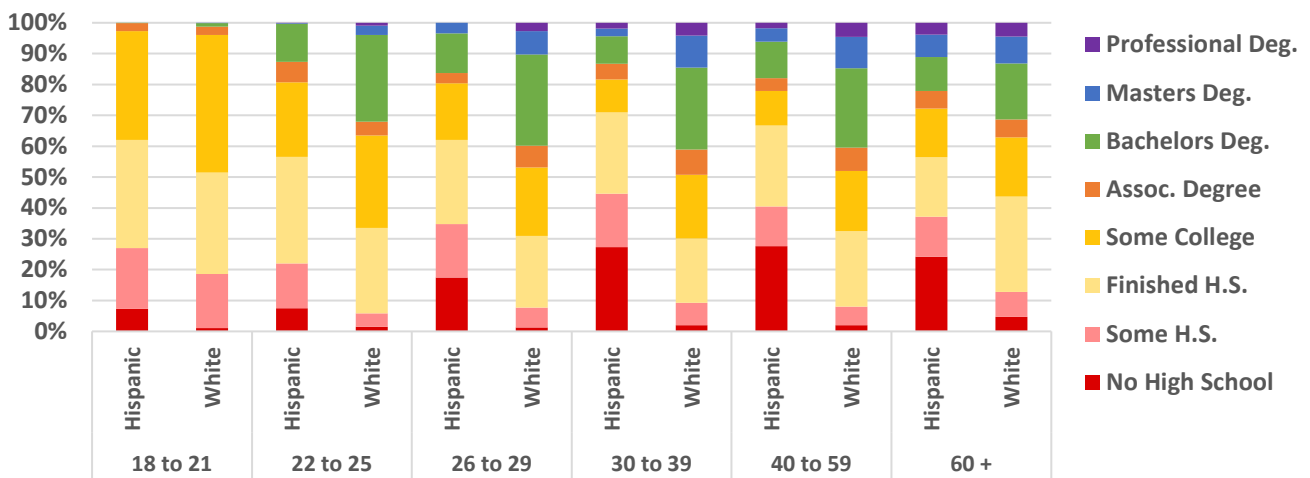


### Health Insurance Coverage by Age Group in 2016\*



\* Numbers may exceed 100% because some individuals may have a combination of public and private insurance.

### Educational Attainment by Age Group in 2016



### School Enrollment Status by Age Group in 2016

