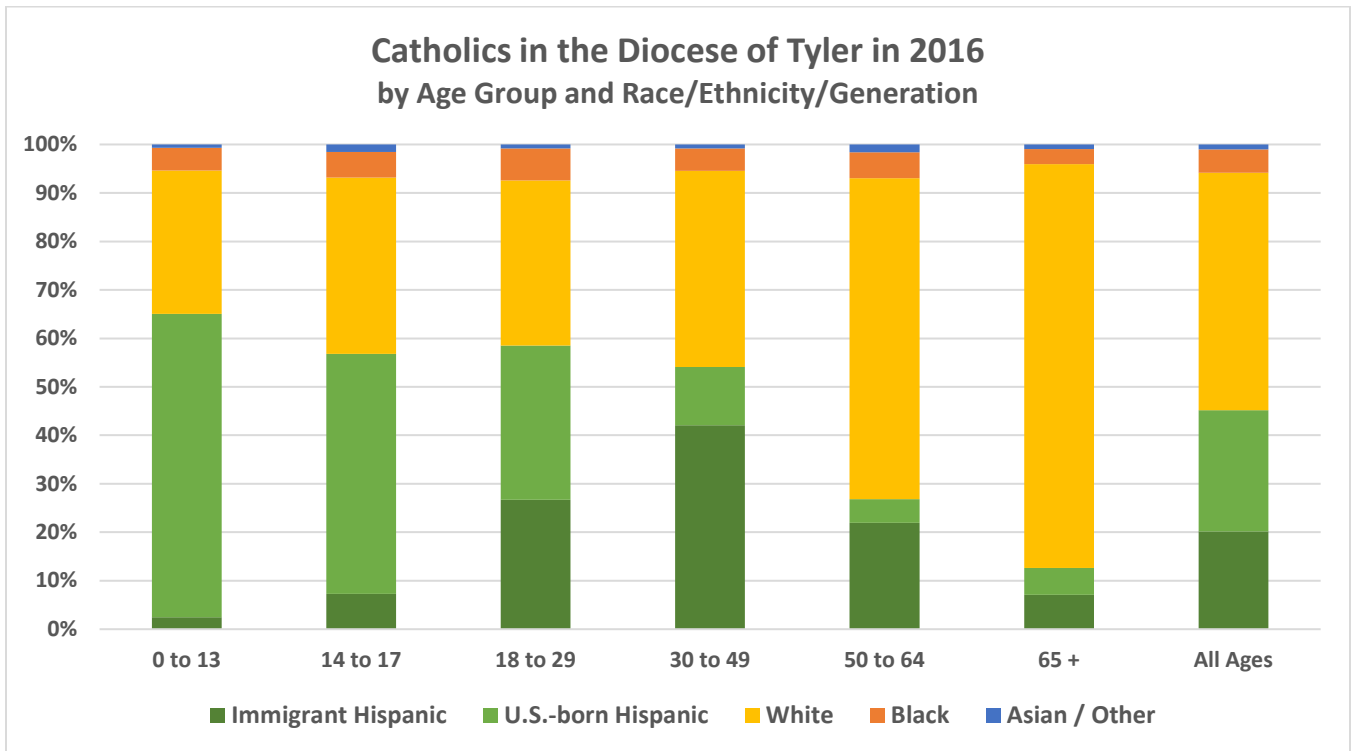


# Key Demographic, Social, and Religious Statistics for the Diocese of Tyler



Racial/Ethnic Groups in the Diocese of Tyler	Total Population in 2000	Total Population in 2016	% Change	Estimated Catholics in 2016	% Catholic
White	928,956	933,587	0%	127,000	14%
Hispanic	110,393	217,654	97%	117,000	54%
Black	209,716	232,118	11%	12,500	5%
Asian/Other	20,721	26,002	25%	2,600	10%
<b>Total</b>	<b>1,269,786</b>	<b>1,409,361</b>	<b>11%</b>	<b>259,000</b>	<b>18%</b>

Number of **parishes** with an organized Hispanic Ministry: **51**

Total regular **Mass attendance** in Spanish: **17,404** at **78** weekly Masses in Spanish in the Diocese  
**0** at **0** monthly Masses in Spanish in the Diocese

Number of Hispanics/Latinos **enrolled in Catholic schools**:

Kinder to 8<sup>th</sup>: **182** out of 599 enrolled

High School: **47** out of 268 enrolled

Number of Hispanic/Latino **priests** in the Diocese... Active: **23** Retired/Inactive: **3** Foreign-born: **21**

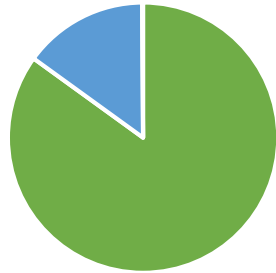
Number of Hispanic/Latino/a **religious** living and/or serving in the Diocese: **19**

Number of Hispanic/Latino **deacons** living and/or serving in the Diocese: **47**

Number of Hispanic/Latino/a **lay ecclesial ministers** serving 20+ hours per week in the Diocese: **0**

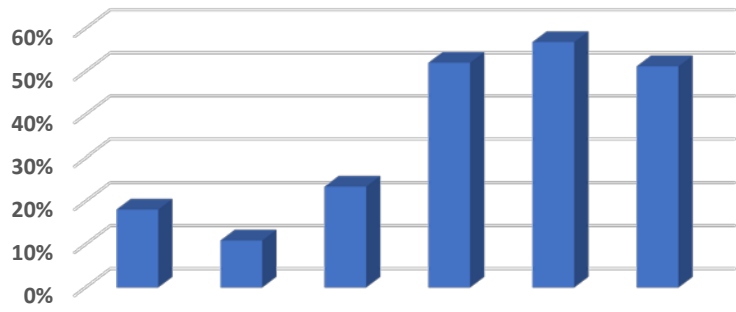
## Public Data from the U.S. Census Bureau's American Community Survey for the Geographic Territory Covered by the Diocese of Tyler

**Hispanic/Latino Household Language in 2016**

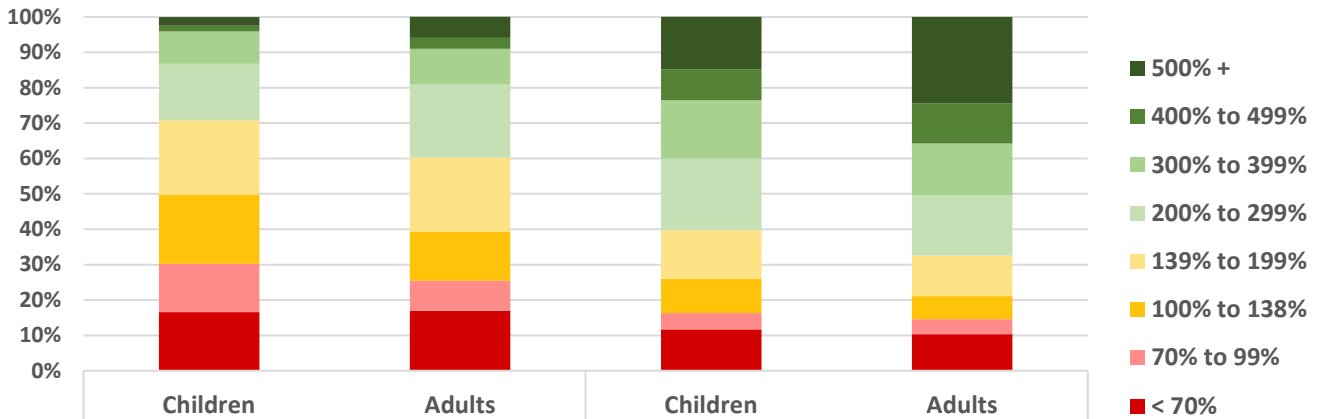


■ Spanish ■ English ■ Other

**Hispanics/Latinos Who Do Not Speak English "Very Well" from 2012 to 2015, by Age**



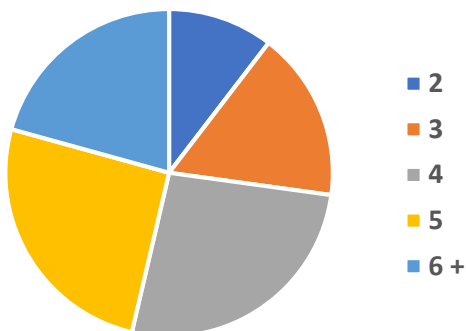
**Household Income as a Percentage of Poverty Level in 2016**



Median Hispanic Household Income: **\$44,000**

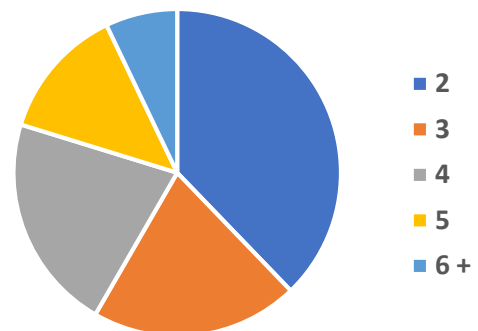
Median White Household Income: **\$61,500**

**Hispanic Family Size in 2016**



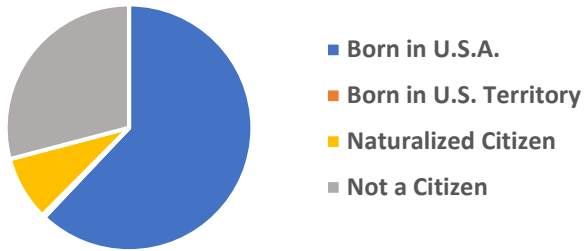
Average Family Size: **4.5**

**White, Non-Hispanic Family Size**

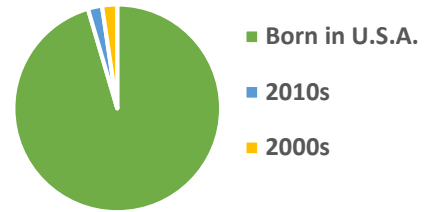


Average Family Size: **3.4**

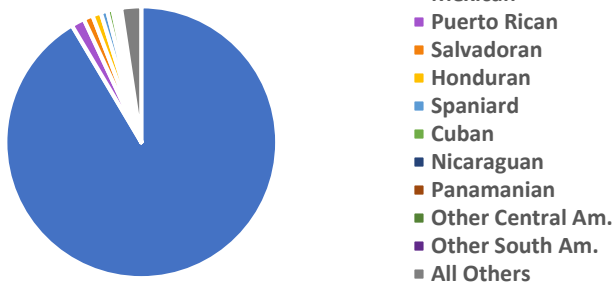
### Citizenship of Hispanic Residents in 2016



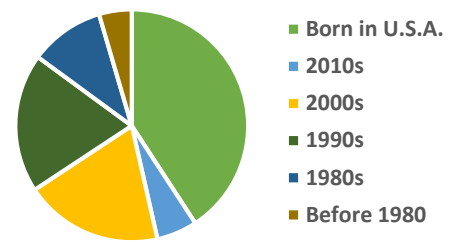
### Decade of Entry for Hispanic Children



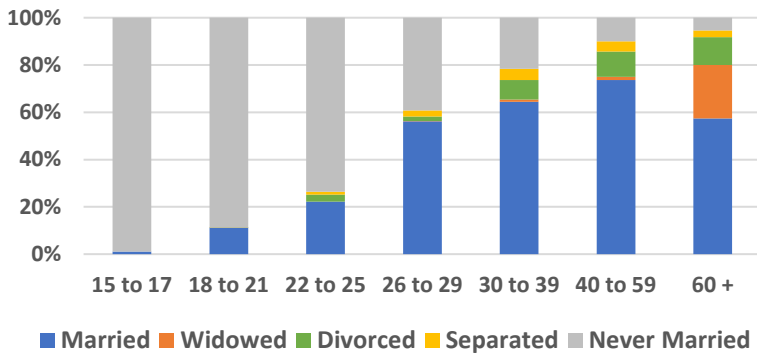
### National Heritage of Hispanic Residents in 2016



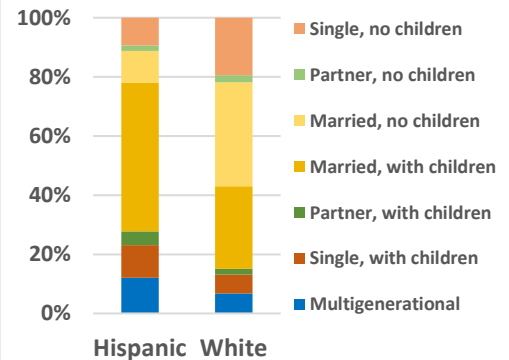
### Decade of Entry for Hispanic Adults



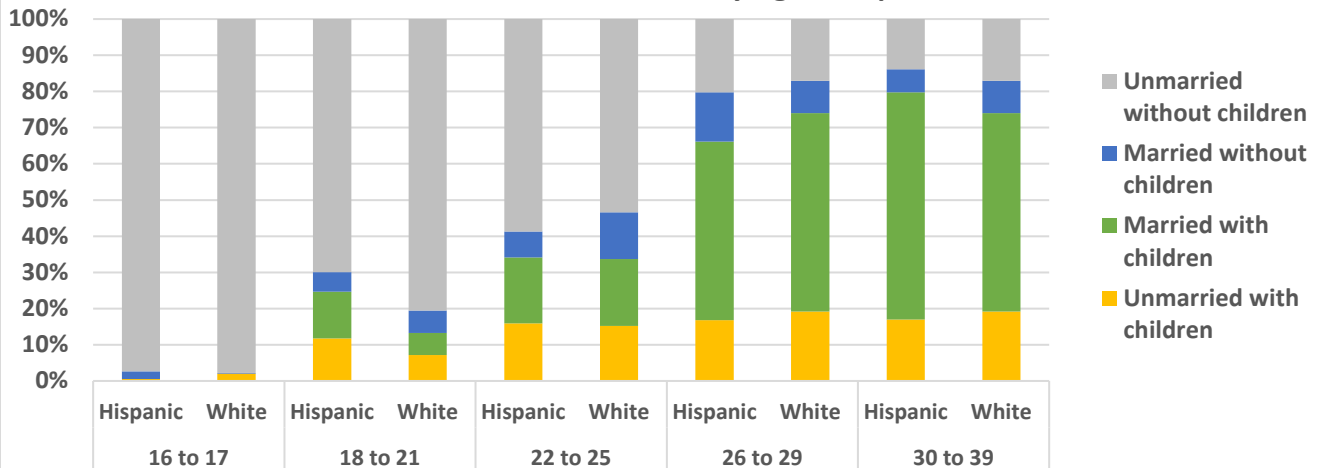
### Hispanic Marital Status by Age from 2012 to 2015



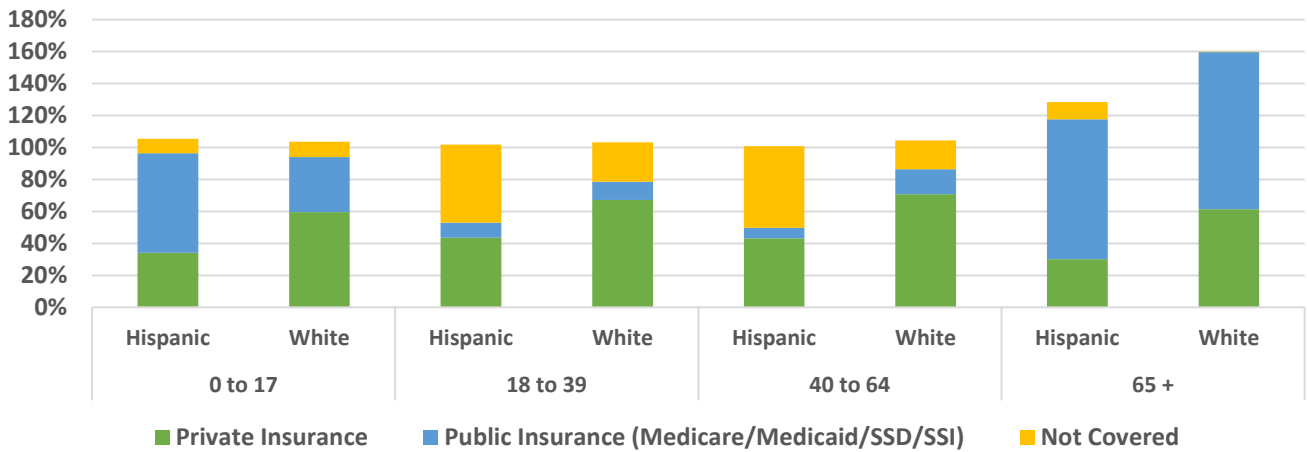
### Household Type, 2012 to 2015



### Marital and Parental Status of Women by Age Group from 2012 to 2015

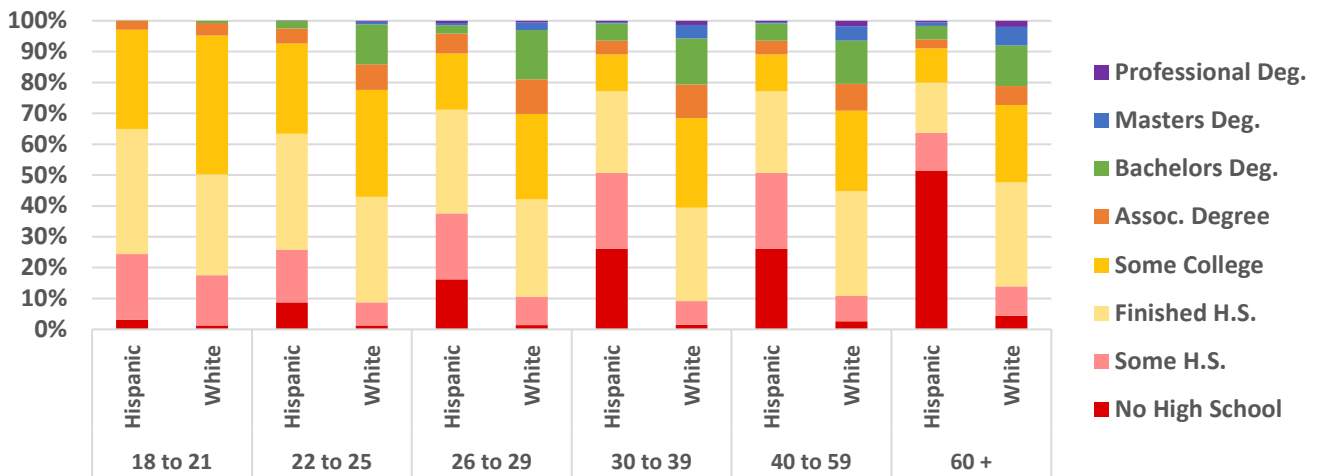


### Health Insurance Coverage by Age Group in 2016\*



\* Numbers may exceed 100% because some individuals may have a combination of public and private insurance.

### Educational Attainment by Age Group from 2012 to 2015



### School Enrollment Status by Age Group from 2012 to 2015

